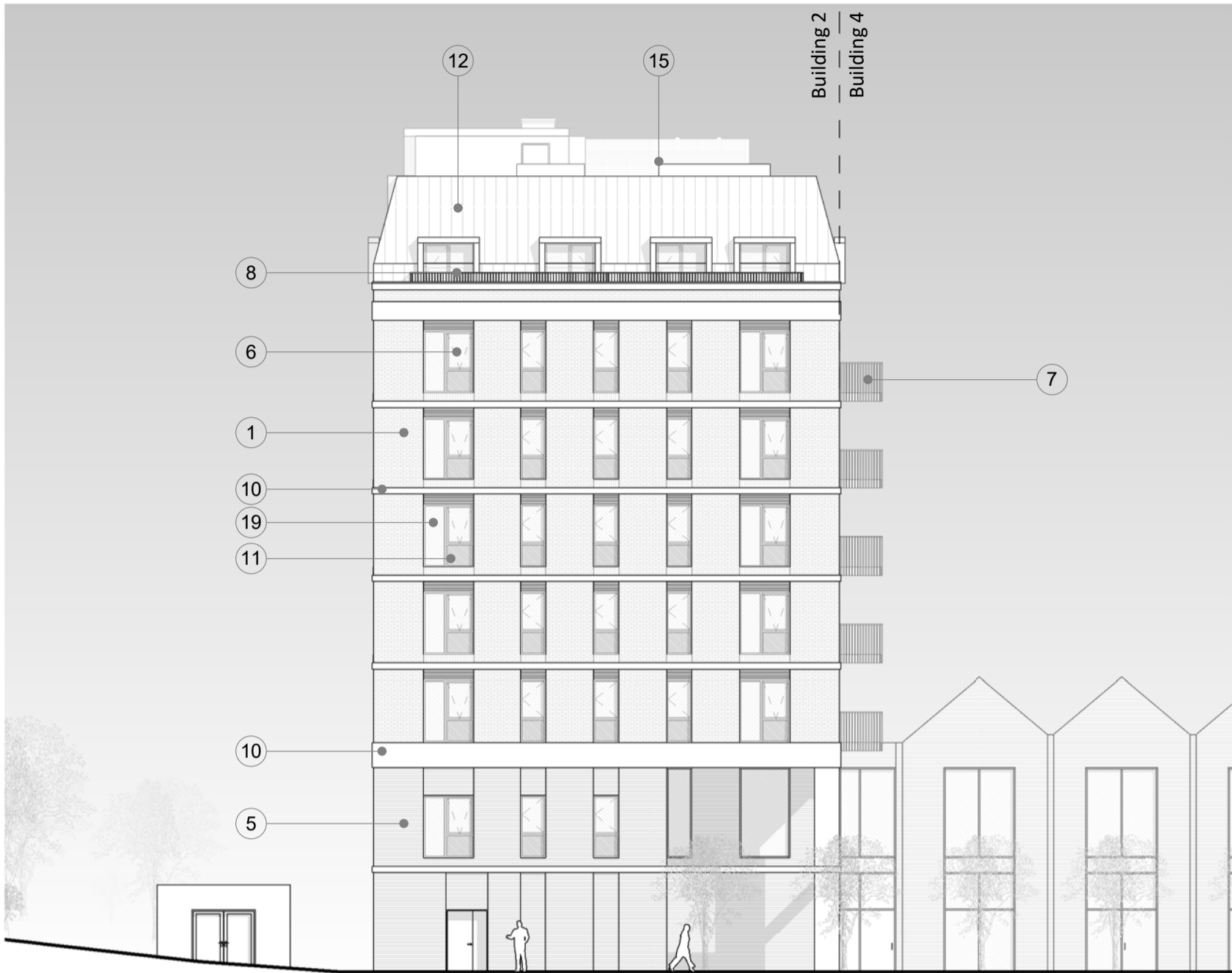


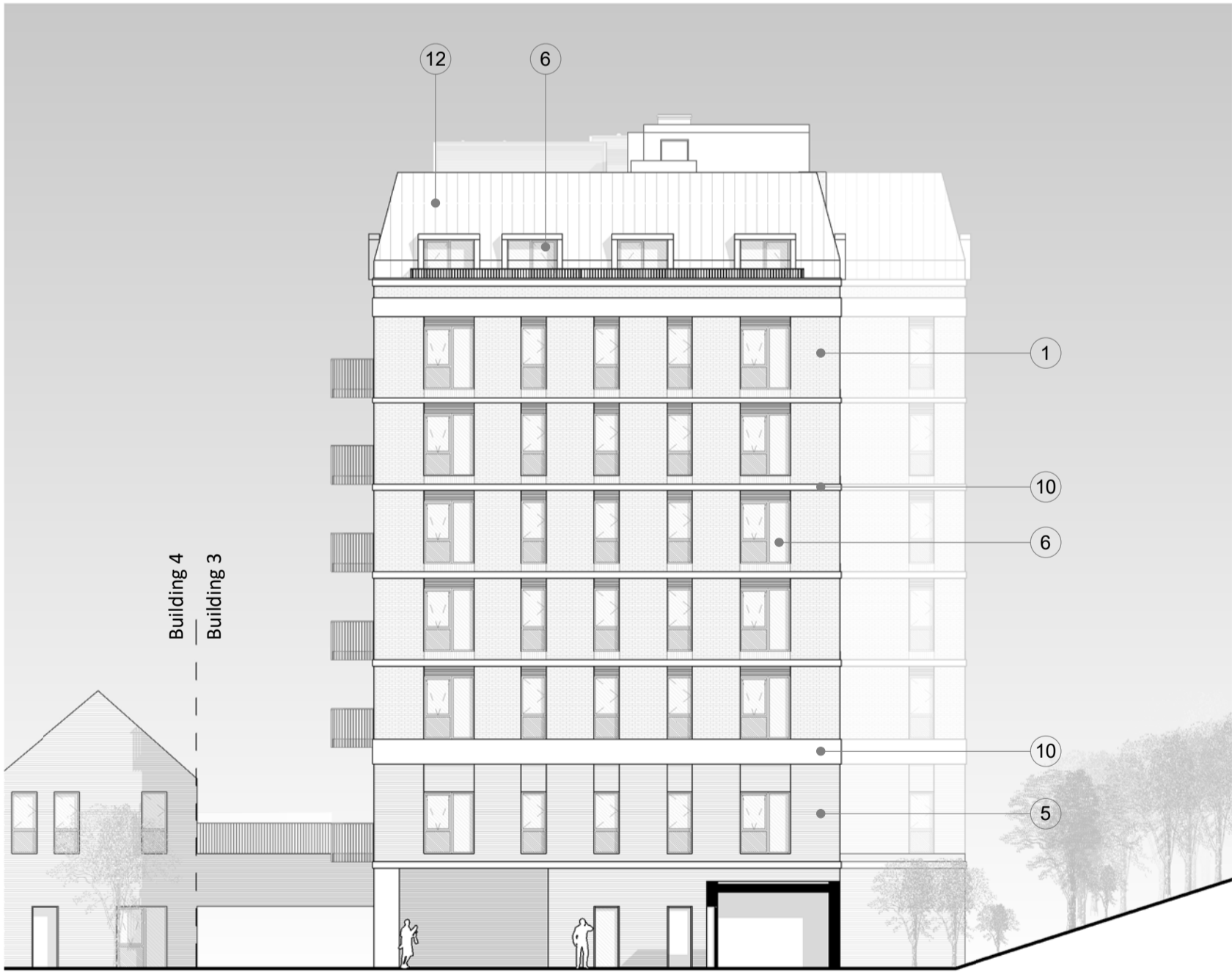
1 Building 2 and 3 - West Elevation
1 : 200



2 Building 2 - South Elevation
1 : 200



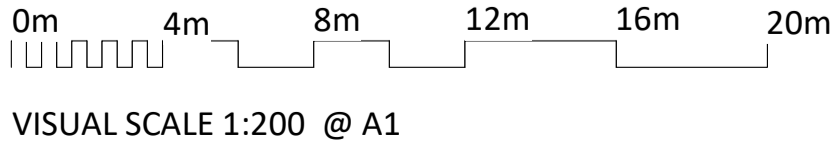
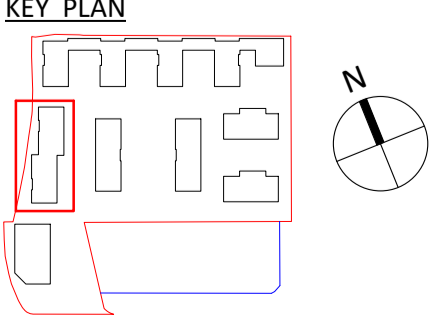
3 Building 2 and 3 - East Elevation
1 : 200



4 Building 3 - North Elevation
1 : 200

NOTES
CONSULTANTS
- Refer to highways consultant's drawings for details
- Refer to landscape consultant's drawings for details
- Landscaping layout is indicative only
AREAS
- Refer to area schedule

Rev	Notes	Date	By	Auth
P1	DRAFT Planning Issue	19-08-30	CS	FvB
P2	Issue for Planning	19-09-05	CS	FvB
P3	Planning amendment	19-09-24	CS	FvB
P4	Update for GLA Application	20-04-07	OT	JBC



- MATERIALS KEY
- 01 Red Brick
 - 02 Buff Brick
 - 03 Coloured Brick
 - 04 Dark Buff Brick
 - 05 Red Brick with projecting feature course
 - 06 Powder coated Aluminium Frame Window
 - 07 Metal Balustrade
 - 08 Glass Balustrade
 - 09 Glazing System
 - 10 Reconstituted Stone

- 11 Opaque Glazing
- 12 Standing Seam Metal Cladding
- 13 Steel Frame
- 14 Metal Louvre Door
- 15 Metal Screen
- 16 Insulated Metal Panel
- 17 Coloured Cladding Panel
- 18 AOV Window
- 19 Transparent Glazing
- 20 Acoustic Louvre

ColladoCollinsArchitects

17-19 Foley Street
London W1W 6DW
T 020 7580 3490
F 020 7580 2917
info@colladocollins.com
www.colladocollins.com

Date: 09/02/19
Drawn By: VC
Checked by: JBC
Scale @ A1: As indicated
Scale @ A3: 1 : 400
CAD File No:

Inland Homes
Hillingdon
Buildings 2, 3 - Elevations

PLANNING
19011

P3(02-03)-100

P4
Revision